

WIREWERKS FIBER+POWER™ SOLUTIONS OVERVIEW



Fiber+Power™ cabling solutions simplify installation, powering and networking of remote devices.

Deployment of IBW Small Cell or DAS, Wi-Fi access points, HD cameras, BAS devices, optical network terminals, and other IP-enabled remote devices is commonplace in our connected world.

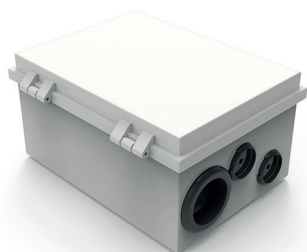
Today, PoE is widely used for remote device powering and communications; however distance limitations, power availability, and remote device placement often-present challenges beyond the capabilities of PoE cabling systems.

To connect and power remote devices beyond the reach of PoE, **Wirewerks' Fiber+Power Solutions** utilize hybrid fiber/copper cables, hybrid patch panels in central locations, and indoor or outdoor hybrid enclosures to provide high-performance fiber networking with electrical power to remote devices through the communications infrastructure.

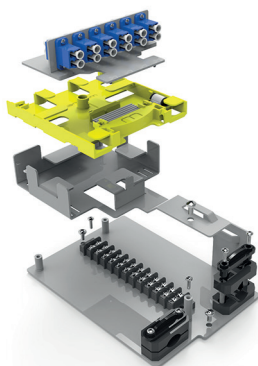
Use **Wirewerks' Fiber+Power Solutions** to provide easy-to-install, cost-saving, rack-to-remote powered fiber cabling over extended distances in IBW, Wi-Fi, HD camera and Building Automation Systems (BAS) applications.

FEATURES AND BENEFITS

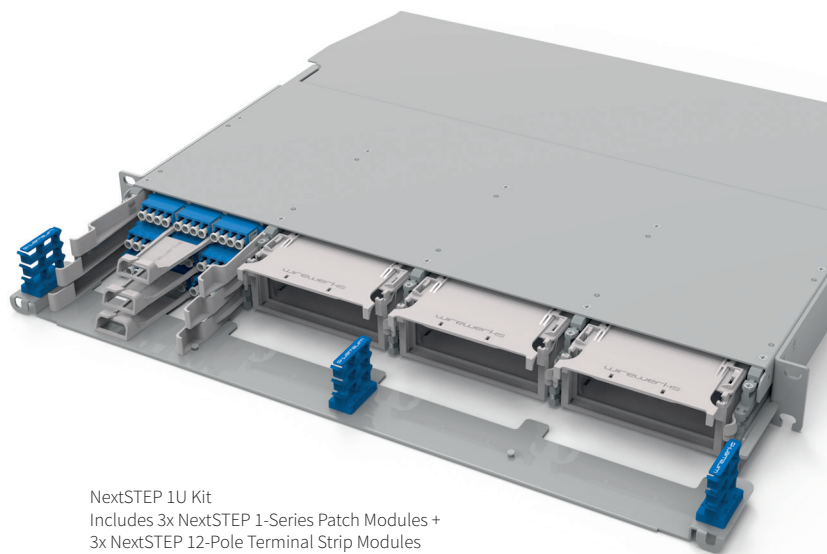
- Avoid extra costs and delays running power to remote devices
- Install remote devices (DAS, Small Cell antennas; security cameras, etc.) in their optimal locations for best coverage without compromises due to power sourcing
- Deploy one hybrid cable for telecom and power versus separate telecom and power infrastructure installed by different technicians/contractors
- Reach, power and connect distant remote devices without PoE Extenders
- Allow property owners/property managers and multiple in-building network operators to segregate and control their respective utility costs and payments



In-Building
Wireless Hybrid Distribution
Enclosure (IBW HDE)



Interior Components
Exploded View



NextSTEP 1U Kit
Includes 3x NextSTEP 1-Series Patch Modules +
3x NextSTEP 12-Pole Terminal Strip Modules

Wirewerks Fiber+Power™ Solutions			
	Product Menu	Capacity	Product Data Sheet
Surface Mount Enclosures <i>Remote Locations</i>	In-Building Wireless Hybrid Distribution Enclosure	12 Fibers 12 Copper Power	PDS-0244
	In-Building Wireless Hybrid Terminal Enclosure	2 Fibers 2 Copper Power	PDS-0245
	Outdoor Hybrid Distribution Enclosure	12/24 Fibers 12/24 Copper Power	Contact Customer Service
Rack Mount Enclosures <i>Central Locations</i>	Fiber+Power Kits for NextSTEP™ 1U Rack Mount Patch Panel	Up to 36 Fibers and 36 Copper Power in 1U	PDS-0246
	Fiber+Power Kits for NextSTEP™ 4U Rack Mount Patch Panel	Up to 144 Fibers and 144 Copper Power in 4U	PDS-0246
Hybrid Cables & Assemblies	Fiber+Power Hybrid Cables	Custom Order Please contact Customer Service for assistance 888.993.4237 or customerservice@wirewerks.com	
	Fiber+Power Hybrid Cable Assemblies		